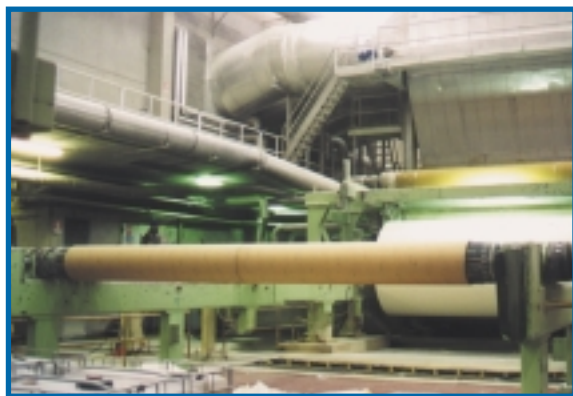


For non-stop machines

The shaft, designed to guarantee a **perfect winding** of materials **at high peripheric speeds**, can carry high loads; it adopts the **long-tested SVECOM PE** system with groups of air tubes with **steel** centering ledges and **rubber** blocking ledges. It is dynamically balanced at the required speed, complete with bearing housings and coupling ends and can be built with **any diameter and length**.



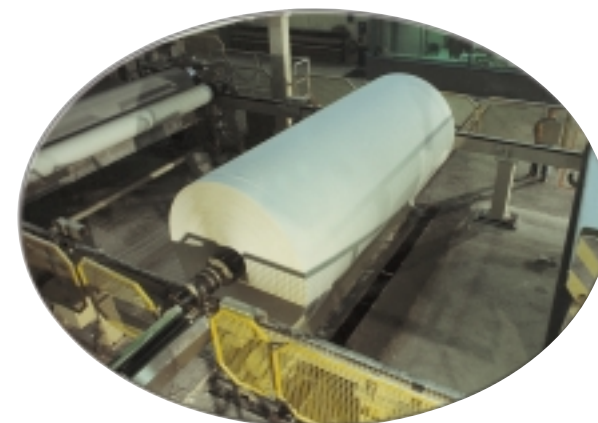
MAIN ADVANTAGES:

- **non-stop production** of the machine with only four expanding shafts.
- reel storage with cardboard cores **without shafts**.
- **drastic reduction** of the number of cylinders.



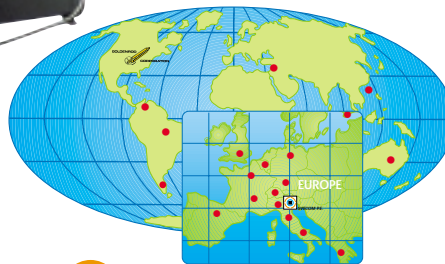
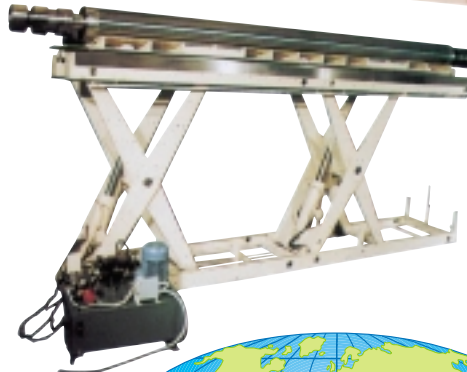
mod. 640/PQL

- *~ up to 700 mm*
- *max. length 12.000 mm*
- *expanding and self-centering*
- *dynamically balanced*
- *independent air tubes*



ACCESSORIES

SVECOM P.E.



 **SVECOM P.E. s.r.l.**

Agents and distributors all over the world. For further informations call the head office.
I - 36075 Montecchio Maggiore - VICENZA - ITALY - Via della Tecnica
Tel. (+39) 0444 499344 r.a. - Fax (+39) 0444 499338 - Telex 481567 SVECOM
E-mail svecom@svecom.com - www.svecom.com

Production

UK



**PNEUMATIC EXPANDING
SHAFTS WITH LEDGES
MOD. 640/PQL**